



- g. Maintain inventory of support and transportation vehicles (ICS Form 218).
- h. Provide transportation services.
  - i. Collect use information on rented equipment.
- j. Requisition maintenance and repair supplies (e.g., fuel, spare parts).
- k. Maintain incident roads.
  - l. Submit reports to Support Branch Director as directed.
- m. Maintain Unit Log (ICS Form 214).

**EQUIPMENT MANAGER** The Equipment Manager provides service, repair, and fuel for all apparatus and equipment; provides transportation and support vehicle services; and maintains records of equipment use and service provided.

- a. Obtain briefing from Ground Support Unit Leader.
- b. Obtain Incident Action Plan to determine locations for assigned resources, Staging Area locations, and fueling and service requirements for all resources.
- c. Obtain necessary equipment and supplies.
- d. Provide maintenance and fueling according to schedule.
- e. Prepare schedules to maximize use of available transportation.
- f. Provide transportation and support vehicles for incident use.
- g. Coordinate with Agency Representatives on service and repair policies as required.
- h. Inspect equipment condition and ensure coverage by equipment agreement.
- i. Determine supplies (e.g., gasoline, diesel, oil and parts needed to maintain equipment in efficient operating condition) and place orders with Supply Unit.
- j. Maintain Support Vehicle Inventory (ICS Form 218).
- k. Maintain equipment rental records.
- l. Maintain equipment service and use records.
- m. Check all service repair areas to ensure that all appropriate safety measures are being taken.
- n. Supervise demobilization of equipment in accordance with incident Demobilization Plan.

### FINANCE SECTION

**FINANCE SECTION CHIEF** (224-1) The Finance Section Chief is responsible for all financial and cost analysis aspects of the incident and for supervising members of the Finance Section.

- a. Obtain briefing from Incident Commander.
- b. Attend briefing with responsible agency to gather information.
- c. Attend planning meeting to gather information on overall strategy.
- d. Identify and order supply and support needs for Finance Section.
- e. Develop an operating plan for Finance function on incident.
- f. Prepare work objectives for subordinates, brief staff, make assignments, and evaluate performance.
- g. Determine need for commissary operation.
- h. Inform Incident Commander and General Staff when Section is fully operational.
- i. Meet with Assisting and Cooperating Agency Representatives as required.
- j. Provide input in all planning sessions on financial and cost analysis matters.
- k. Maintain daily contact with agency(s) administrative headquarters on Finance matters.
- l. Ensure that all personnel time records are transmitted to home agencies according to policy.
- m. Participate in all demobilization planning.
- n. Ensure that all obligation documents initiated at the incident are properly prepared and completed.
- o. Brief agency administration personnel on all incident related business management issues needing attention and follow-up prior to leaving incident.

**TIME UNIT LEADER** (224-2) The Time Unit Leader is responsible for equipment and personnel time recording and for managing the commissary operation.

- a. Obtain briefing from Finance Section Chief.

- b. Determine incident requirements for Time Recording function.
- c. Establish contact with appropriate agency personnel/representatives.
- d. Organize and establish Time Unit.
- e. Establish Unit objectives, make assignments, and evaluate performance.
- f. Ensure that daily personnel time recording documents are prepared and compliance to time policy is met.
- g. Establish commissary operation as required.
- h. Submit cost estimate data forms to Cost Unit as required. Provide for records security.
- i. Ensure that all records are current or complete prior to demobilization.
- k. Time reports from assisting agencies should be released to the respective Agency Representatives prior to demobilization.
- l. Brief Finance Section Chief on current problems and recommendations, and outstanding issues and follow-up requirements.
- m. Maintain Unit Log (ICS Form 214).

#### EQUIPMENT TIME RECORDER

- a. Obtain briefing from Time Unit Leader.
- b. Set up Equipment Time Recording function in location designated by Time Unit Leader.
- c. Advise Ground Support Unit, Facilities Unit, and Air Support Group of the requirement to establish and maintain a file for maintaining a daily record of equipment time.
- d. Assist units in establishing a system for collecting equipment time reports.
- e. Post all equipment time tickets within four hours after the end of each operational period.
- f. Prepare a Use and Summary Invoice for equipment (as required) within 12 hours after equipment arrival at incident.
- g. Submit data to Time Unit Leader for cost effectiveness analysis.
- h. Maintain current posting on all charges or credits for fuel, parts, services and commissary.

- i. Verify all time data and deductions with owner/operator of equipment.
- j. Complete all forms according to agency specifications.
- k. Close out forms prior to demobilization.
- l. Distribute copies per agency and incident policy.

#### PERSONNEL TIME RECORDER

- a. Establish and maintain a file for employee time reports within the first operational period.
- b. Initiate, gather, or update a time report from all applicable personnel assigned to the incident for each operational period.
- c. Ensure that all employee identification information is verified to be correct on the time report.
- d. Post personnel travel and work hours, transfers, promotions, specific pay provisions and terminations to personnel time documents.
- e. Post all commissary issues to personnel time documents.
- f. Ensure that time reports are signed.
- g. Close out time documents prior to personnel leaving the incident.
- h. Distribute all time documents according to agency policy.
- i. Maintain a log of excessive hours worked and give to Time Unit Leader daily.

#### COMMISSARY MANAGER

- a. Set up and provide commissary operation to meet incident needs.
- b. Establish and maintain adequate security for commissary.
- c. Request commissary stock through Supply Unit Leader (must have Finance Section Chief approval).
- d. Maintain complete record of commissary stock including invoices for material received, issuance records, transfer records and closing inventories.
- e. Maintain commissary issue record by crews and submit records to time recorder during or at the end of each operational period.
- f. Use proper agency forms for all record keeping. Complete forms according to agency specification.

- g. Protect commissary stock from pilferage and/or deterioration.
- h. Ensure that all records are closed out prior to demobilization.
- i. Perform inventory of commissary stock.
- j. Ensure that all commissary stock is returned.
- k. Demobilize commissary operation in accordance with Incident Demobilization Plan.

**PROCUREMENT UNIT LEADER (ICS 224-5)** The Procurement Unit Leader is responsible for administering all financial matters pertaining to vendor contracts.

- a. Obtain briefing from Finance Section Chief.
- b. Contract appropriate unit Leaders on incident needs and any special procedures.
- c. Coordinate with local jurisdiction on plans and supply sources.
- d. Obtain Incident Procurement Plan.
- e. Prepare and sign contracts and land use agreements as needed.
- f. Draft memorandums of understanding.
- g. Establish contracts with supply vendors as required.
- h. Interpret contracts/agreements and resolve claims or disputes within delegated authority.
- i. Coordinate with Compensation/Claims Unit on procedures for handling claims.
- j. Finalize all agreements and contracts.
- k. Coordinate use of imprest funds as required.
- l. Complete final processing and send documents for payment.
- m. Coordinate cost data in contracts with Cost Unit Leader.
- n. Maintain Unit Log. (ICS-214)

**COMPENSATION/CLAIMS UNIT LEADER (ICS 2244)**

The Compensation/Claims Unit Leader is responsible for the overall management and direction of all Compensation for Injury Specialist and Claims Specialists assigned to the incident.

FINANCE

1-47

FINANCE

- a. Obtain briefing from Finance Section Chief.
- b. Establish contact with incident Safety Officer and Liaison Officer or Agency Representatives if no Liaison Officer is assigned.
- c. Determine the need for Compensation for Injury and Claims Specialists and order personnel if needed.
- d. Establish Compensation for Injury work area with the Medical Unit whenever feasible.
- e. Obtain a copy of the Incident Medical Plan.
- f. Ensure that Compensation for Injury and Claims Specialists have adequate work space and supplies.
- g. Brief Compensation/Claims Specialists on incident activity.
- h. Coordinate with Procurement Unit on procedures for handling claims.
- i. Periodically review all logs and forms produced by Compensation/Claims Specialists to ensure:
  - 1. Work is complete
  - 2. Entries are accurate and timely
  - 3. Work is in compliance with Agency requirements and policies.
- j. Keep Finance Section Chief briefed on unit status and activity.
- k. Obtain Demobilization Plan and ensure that Compensation for Injury and Claims Specialists are adequately briefed on Demobilization Plan.
- l. Ensure that all Compensation for Injury and Claims logs and forms are up to date and routed to the proper agency for post-incident processing prior to demobilization.
- m. Demobilize unit in accordance with Demobilization Plan.
- n. Maintain Unit Log (ICS Form 214).

**COMPENSATION FOR INJURY SPECIALIST**

Compensation for Injury Specialist is responsible for administering financial matters arising from serious injuries and deaths occurring on the Incident. Many of the Specialist's functions are done or partially done in the Medical Unit.

FINANCE

1-48

FINANCE

- a. Obtain briefing from Compensation/Claims Unit Leader or Finance Section Chief.
- b. Collocate Compensation for Injury operations with those of the Medical Unit when possible.
- c. Establish procedure with Medical Unit Leader on prompt notification of injuries or deaths.
- d. Establish contact with incident Safety Officer and Agency Representatives.
- e. Obtain copy of Incident Medical Plan (ICS Form 206).
- f. Provide written authority for persons requiring medical treatment.
- g. Ensure that correct agency forms are being used.
- h. Provide correct billing forms for transmittal to doctor and/or hospital.
- i. Keep informed and report on status of hospitalized personnel.
- j. Obtain all witness statements from Safety Officer and/or Medical Unit and review for completeness.
- k. Provide analysis of injuries and coordinate with Safety Officer.
- l. Maintain log of all injuries occurring on incident.
- m. Arrange for notification of next of kin of seriously injured or deceased persons.
- n. Coordinate/handle all administrative paper work on serious injuries or deaths.
- o. Obtain Demobilization Plan and ensure that necessary follow-up actions will be handled.
- p. Coordinate with appropriate agency(s) to assume responsibility for injured personnel in local hospitals after demobilization.

**CLAIMS SPECIALIST**

The Claims Specialist is responsible for handling all claims related activities (other than injury) for the incident.

- a. Obtain briefing from Compensation/Claims Unit Leader or Finance Section Chief.
- b. Develop and maintain a log of potential claims.
- c. Coordinate claims prevention plan with applicable incident functions.

FINANCE

1-49

FINANCE

- d. Initiate investigation on all claims other than personnel injury.
- e. Ensure that site and property involved in investigation are protected.
- f. Coordinate with investigation team as necessary.
- g. Obtain witness statements pertaining to claims other than personnel injury.
- h. Document any incomplete investigations.
- i. Document follow-up action needs by local agency.
- j. Keep the Compensation/Claims Unit Leader advised on nature and status of all existing and potential claims.
- k. Ensure use of correct agency forms.

**COST UNIT LEADER (FP 224-3)** The Cost Unit Leader is responsible for collecting all cost data, performing cost effectiveness analyses and providing cost estimates and cost saving recommendations for the incident.

- a. Obtain briefing from Finance Section Chief.
- b. Coordinate with agency headquarters on cost reporting procedures.
- c. Obtain and record all cost data.
- d. Prepare incident cost summaries.
- e. Prepare resources-use cost estimates for Planning.
- f. Make recommendations for cost savings to Finance Section Chief.
- g. Maintain cumulative incident cost records.
- h. Ensure that all cost documents are accurately prepared.
- i. Complete all records prior to demobilization.
- j. Provide reports to Finance Chief.
- k. Maintain Unit Log. (ICS 214)

FINANCE

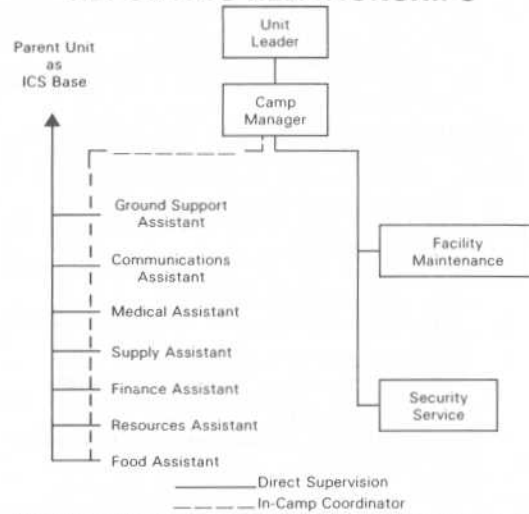
1 50

FINANCE

**MAJOR INCIDENT ORGANIZATION**



**ICS CAMP ORGANIZATION AND REPORTING RELATIONSHIPS**



The Camp Manager will provide direct supervision for all facility maintenance and security services at the Camp. Several of the functional unit activities which are performed at the ICS Base may also be performed at the Camp(s). These functional units assigned to the Camp(s) will receive their direct supervision from their Unit Leaders at the ICS Base. During the time that a Camp is established, the Camp Manager will be responsible to provide non-technical coordination for all units operating within the Camp in order to ensure orderly and harmonious operation of the Camp and efficient use of all resources and personnel assigned to the Camp.

**ICS ORGANIZATION GUIDE**

C O M M A N D	1 Incident Commander—one per incident. Unless incident is multi-jurisdictional					
	2 Multi-jurisdictional incidents establish Unified Command with each jurisdiction supplying individual to represent agency in Unified Command Structure					
	3 Incident Commander may have Deputy					
	4 Command Staff Officers—one per function per incident					
	5 Command Staff may have assistants as needed					
	6 Agency Representatives report to Liaison Officer on Command Staff					
<b>INCIDENT BASE RECOMMENDED MINIMUM PERSONNEL REQUIREMENTS (PER TWELVE (12) HOUR OPERATIONAL PERIOD)</b>						
If camps are established, the minimum personnel requirements for the Base may be modified or additional personnel may be added to support Camps.)						
<b>UNIT POSITION</b>		<b>SIZE OF INCIDENT (NUMBER OF DIVISIONS)</b>				
		2	5	10	15	25
O P E R A T I O N S	Operations Section Chief	One Per Operational Period				
	Branch Director	2	3	4	6	
	Division/Group Supervisor	2	5	10	15	25
	Strike Team Leaders	As Needed				
	Task Force Leaders	As Needed				
	Air Operations Director	1	1	1	1	1
	Air Attack Group Supervisor	1	1	1	1	1
	Air Tanker Coordinator	As Needed				
	Helicopter Coordinator	As Needed				
	Air Support Group Supervisor	1	1	1	1	1
	Helibase Manager	One Per Helibase				
	Helispot Manager	One Per Helispot				
	Fixed Wing Support Leader	One Per Airport				
	Staging Area Manager	One Per Staging Area				
	P L A N S	Planning Section Chief	One Per Incident			
Resources Unit Leader		1	1	1	1	1
Status Recorders		1	2	3	3	3
Check-In Recorders		As Needed				
Technical Specialists		As Needed				
Situation Unit Leader		1	1	1	1	1
Field Observer		1	2	2	3	
Weather Observer		As Needed				
Aerial/Ortho Photo Analyst		As Needed				
Display/Report Processor		1	1	1	2	
IR Equipment Operators		Two If Needed				
Computer Terminal Operator		1	1	1	1	1
Photographer		1	1	1	1	1
Documentation Unit Leader		1	1	1	1	1
Demobilization Unit Leader		1	1	1	1	1
(Demob Recorders from Resources)	As Needed					

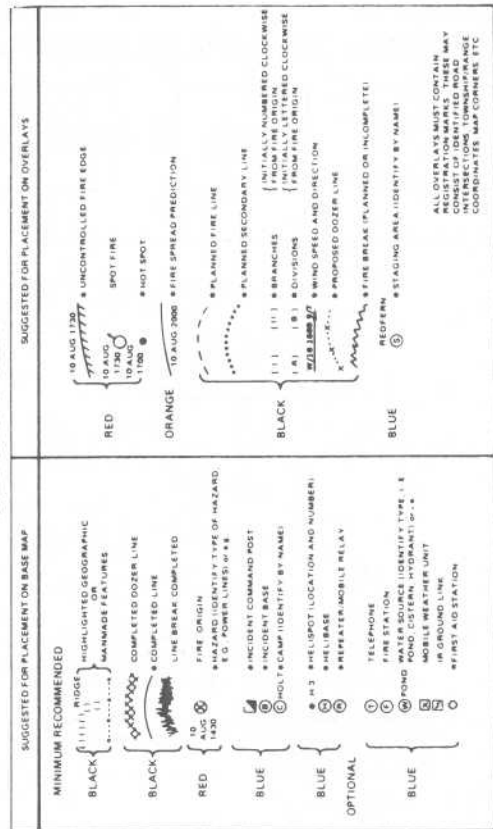
UNIT POSITION	SIZE OF INCIDENT (NUMBER OF DIVISIONS)				
	2	5	10	15	25
Logistics Section Chief	One Per Incident				
Service Branch Director	As Needed				
Communications Unit Leader	1	1	1	1	1
Head Dispatcher	1	1	1	1	1
Incident Dispatcher	1	2	3	3	4
Message Center Operator	1	1	1	2	2
Messenger	1	2	2	2	2
Communications Technician	1	2	4	4	4
Medical Unit Leader	1	1	1	1	1
Medical Unit Leader Assistant	As Needed				
Food Unit Leader	1	1	1	1	1
Food Unit Assistant (each camp)	As Needed				
Cook	1	1	2	2	2
Assistant Cook	2	2	6	12	12
Helper	8	8	16	24	24
Support Branch Director	As Needed				
Supply Unit Leader	1	1	1	1	1
Camp Supply Asst (each camp)	As Needed				
Ordering Manager	1	1	1	1	1
Rec/Distribution Manager	1	1	1	1	1
Tool/Equipment Specialist	As Needed				
Recorders	1	1	2	2	2
Helpers	1	2	2	2	2
Facility Unit Leader	1	1	1	1	1
Base Manager	1	1	1	1	1
Camp Manager (each camp)	As Needed				
Facility Maintenance Specialist	1	1	1	1	1
Security Manager	1	1	1	1	1
Helpers	6	6	12	12	12
Ground Support Unit Leader	1	1	1	1	1
Equipment Manager	1	1	1	1	1
Assistants	As Needed				
Equipment Timekeeper	1	1	1	1	1
Mechanics	1	1	3	5	7
Drivers	As Needed				
Operators	As Needed				
Finance Section Chief	One Per Incident				
Time Unit Leader	1	1	1	1	1
Time Recorder - Personnel	1	3	3	5	
Procurement Unit Leader	1	1	1	1	1
Compensation/Claims Unit Leader	1	1	1	1	1
Compensation Specialists	As Needed				
Claims Specialists	As Needed				
Cost Unit Leader	1	1	1	1	1
Cost Analysts	1	1	1	1	1

T-CARD COLORS AND USES		
Eight different color resource cards (T-cards) are used to denote kind of resources. The card colors and resources they represent are:		
KIND RESOURCE	CARD COLOR	FORM NUMBER (219)
Engines	Rose	3
Handcrews	Green	2
Dozers	Yellow	7
Aircraft	Orange	6
Helicopter	Blue	4
Misc. Equip / Task Forces	Tan	8
Personnel	White	5
Location Labels	Gray	1
Property	White/red	9

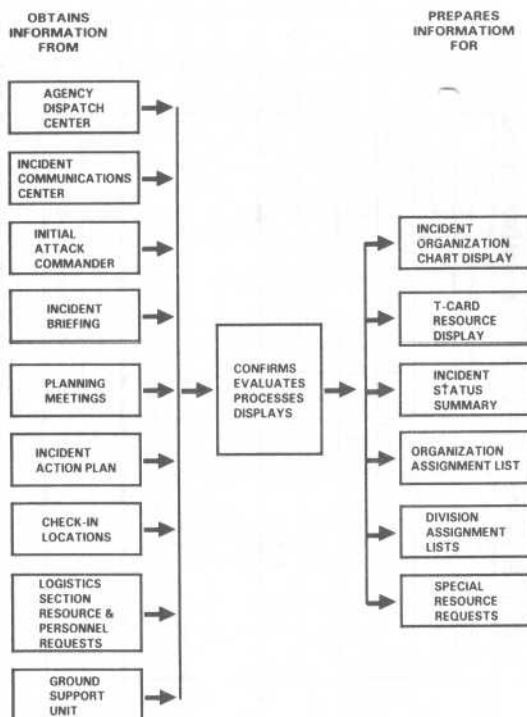
INCIDENT COMMAND SYSTEM FORMS	
Forms and records which are routinely used in the ICS are listed below. Those marked with an (*) are commonly used in written Incident Action Plans.	
Incident Briefing	ICS Form 201
*Incident Objectives	ICS Form 202
*Organization Assignment List	ICS Form 203
*Division Assignment List	ICS Form 204
*Incident Radio Communications Plan	ICS Form 205
*Medical Plan	ICS Form 206
Incident Organization Chart	ICS Form 207
Incident Status Summary	ICS Form 208
Status Change Card	ICS Form 210
Check-In List	ICS Form 211
General Message	ICS Form 213
Unit Log	ICS Form 214
Operational Planning Worksheet	ICS Form 215
Radio Requirements Worksheet	ICS Form 216
Radio Frequency Assignment Worksheet	ICS Form 217
Support Vehicle Inventory	ICS Form 218
Resource Status Card (1-8)	ICS Form 219
Air Operations Summary Worksheet	ICS Form 220
Demobilization Checklist	ICS Form 221

3-1



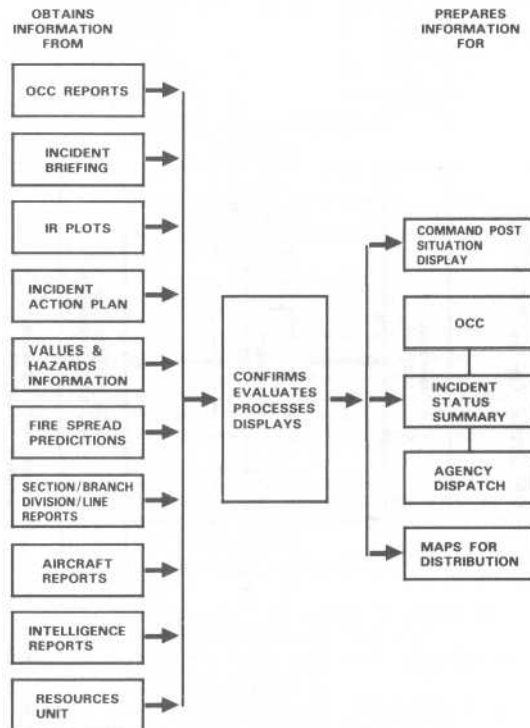
3-2

**RESOURCES UNIT FUNCTIONS & INTERACTIONS**



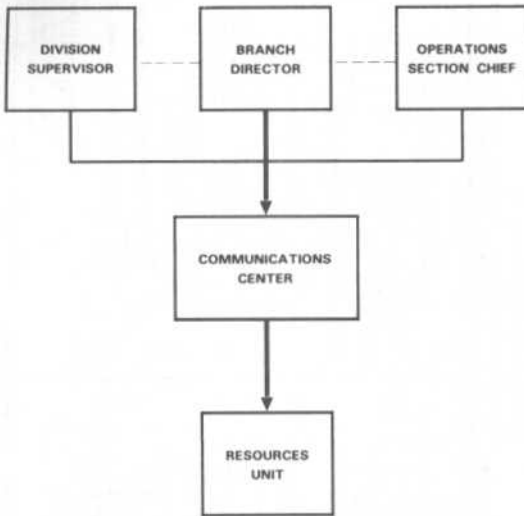
3-3

**SITUATION UNIT FUNCTIONS & INTERACTIONS**



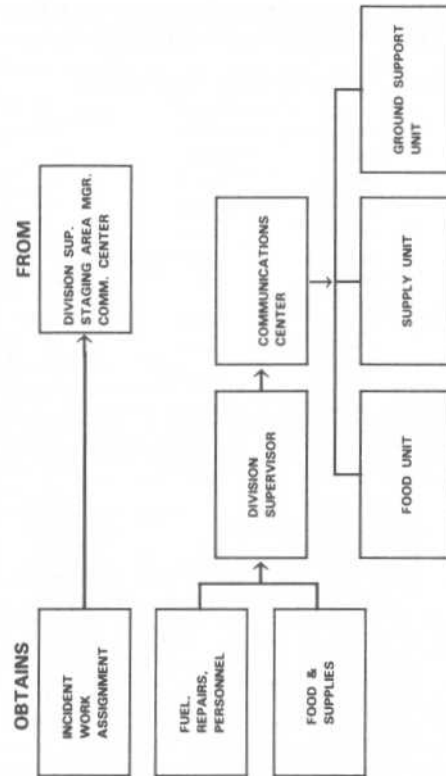
3-4

**RESOURCE STATUS CHANGE REPORTING**



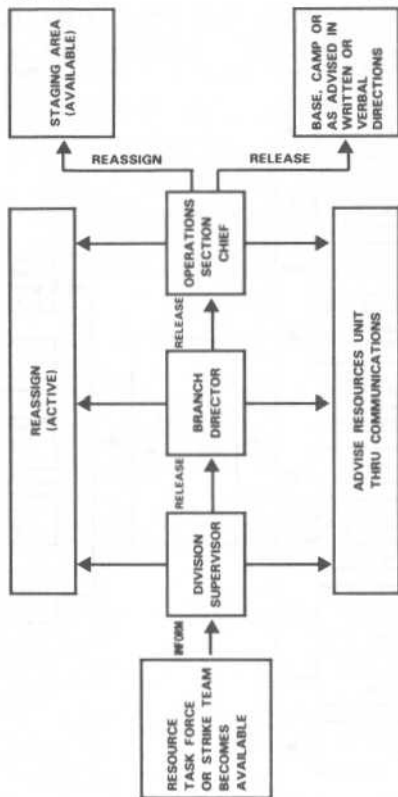
1. REPORT: A) RESOURCES CHANGING STATUS (ASSIGNED, AVAILABLE, OUT OF SERVICE)  
B) RESOURCES MOVING BETWEEN DIVISIONS
  2. NOTE: AUTHORITY WHO APPROVES THE STATUS CHANGE IS RESPONSIBLE FOR REPORTING IT TO RESTAT
- STATUS REPORTING  
- - - COORDINATION

**STRIKE TEAM LEADER INTERACTIONS**



\*OUT OF SERVICE RESOURCES INTERACT DIRECTLY WITH APPROPRIATE UNITS FOR SERVICE AND SUPPORT

**RELEASE OF RESOURCES**



NOTE: AUTHORITY WHO APPROVES THE STATUS CHANGE IS RESPONSIBLE FOR REPORTING IT TO RESTAT

**STRIKE TEAM TYPES AND MINIMUM STANDARDS**

KIND	STRIKE TEAM TYPES	NUMBER/TYPE	MINIMUM EQUIPMENT STANDARDS										MINIMUM MANNING		
			Pump Capac	Water Capac	2 1/2" Hose	1 1/2" Hose	1" Hose	Ladder	Heavy Stream	S/T Leader	Per Single Resource	Total Personnel			
E	A	5 - Type 1	1000 GPM	400 Gal	1200 Ft	400 Ft	200 Ft	20 Ft	500 Ext	500 GPM	1	4	21		
N	B	5 - Type 2	500 GPM	400 Gal	1000 Ft	500 Ft	300 Ft	20 Ft	N/A	N/A	1	3	16		
G	C	5 - Type 3	120 GPM	300 Gal	N/A	1000 Ft	800 Ft	N/A	N/A	N/A	1	3	16		
I	D	5 - Type 4	50 GPM	200 Gal	N/A	300 Ft	800 Ft	N/A	N/A	N/A	1	3	16		
N	E	Hand crew combinations consisting of a minimum of 35 persons (Do not mix type 1 and Type 2 crews)	Type 1 Handcrews have no restrictions on use										1	N/A	36
E	H	2 - Type 1 1 - Dozer Tender	Type 2 Handcrews may have use restrictions										1	N/A	36
R	K	2 - Type 1 1 - Dozer Tender	Heavy Dozer (i.e., D-7, D-8 or equivalent)										1	2	6
W	L	2 - Type 2 1 - Dozer Tender	Medium Dozer (i.e., D-5, D-6 or equivalent)										1	2	6
S	M	2 - Type 3 1 - Dozer Tender	Light Dozer (i.e., D-4 or equivalent)										1	2	6

**PRIMARY MOBILE SUPPRESSION RESOURCES**

RESOURCE	RADIO CALL	COMPONENTS	TYPES			
			1	2	3	4
Engine Company	Engine	Pump	1000 GPM	500 GPM	120 GPM	50 GPM
		Water Tank	400 Gal	400 Gal	300 Gal	200 Gal
Truck Company	Truck	Ground Ladder	163 Ft	163 Ft		
		Aerial/Snorkel	75 Ft	50 Ft		
Water Tender	Water Tender	Pump	300 GPM	1000 Gal		
		Water Tank	1000 Gal	1000 Gal		
Brush Patrol	Patrol	Pump	15 GPM			
		Hose 1" - 150 Ft				
Rescue Medical	Rescue Amb Medic Squad	Transport capacity	2	0		
		Personnel	2 (1 EMT-I & 1 EMT-II)	2 (1 EMT-I & 1 EMT-II)		
Bulldozer	Dozer	Size	Heavy (D-7, D-8)	Medium (D-5, D-6)	Light (D-4)	
		Personnel	2	2	2	
Bulldozer Tender	Dozer Tender	Fuel-100 Gal				
		Compressed Air (opt)				
Hand Crew	Crew #	Personnel, Tools and Transportation	TYPE 1		TYPE 2	
			<ul style="list-style-type: none"> <li>Highest training level</li> <li>No use restriction</li> <li>Fully mobilized</li> <li>Highest experience level</li> <li>Fully equipped</li> <li>Permanently assigned</li> <li>Supervision</li> </ul>	<ul style="list-style-type: none"> <li>Minimum training or some use restriction or not fully mobilized or moderate experience or minimum equipment or no assigned supervision</li> </ul>		
Air Crash	Crash	Light water and/or protein foam with pump and turret				
Fire Boats	Boat	Pump				
Foam/Carrier	Foam	Protein foam or light water	Light Water	High Expansion	Protein	
Dry Chemical	Drum	500 lb.	Truck	Trailer		

4-2

**GLOSSARY OF TERMS**

This glossary contains definitions of terms frequently used in ICS documentation.

**Agency Representative.** Individual assigned to an incident from an assisting or cooperating agency who has been delegated full authority to make decisions on all matters affecting that agency's participation at the incident. Agency Representatives report to the Incident Liaise: Officer.

**Air Tanker.** Any fixed wing aircraft certified by FAA as being capable of transport and delivery of fire retardant solutions.

**Allocated Resources.** Resources dispatched to an incident that have not yet checked-in with the Incident Communications Center.

**Assigned Resources.** Resources checked-in and assigned work tasks on an incident.

**Assisting Agency.** An agency directly contributing suppression, rescue, support, or service resources to another agency.

**Available Resources.** Resources assigned to an incident and available for an assignment.

**Base.** That location at which the primary logistics functions are coordinated and administered. (Incident name or other designator will be added to the term "Base.") The Incident Command Post may be collocated with the base. There is only one base per incident.

**Branch.** That organizational level having functional/geographic responsibility for 'major' segments of incident operations. The Branch level is organizationally between Section and Division/Group.

**Brush Patrol Unit.** Any light, mobile unit, having limited pumping and water capacity for off-road operations.

**Camp.** A geographical site, within the general incident area, separate from the base, equipped and staffed to provide food, water, and sanitary services to incident personnel.

5-1

**PRIMARY MOBILE SUPPRESSION RESOURCES**

RESOURCE	RADIO CALL	COMPONENTS	TYPES			
			1	2	3	4
Air Tanker	Tanker Designator	Capacity	2000	1000	800	
		Helicopters				
Helicopters	Copter	Seats, including pilot (maximum)	16	10	5	3
		Card weight capacity	5000	2500	1200	600
Helicopter Tender	Helicopter #	Tank, gallons of retardant (minimum)	700	300	100	75
		Example	Bell 214 Heavy	Bell 204, 205, 212 Medium	Bell 206 Light	Bell 47 Light
Helicopter Tender	Helicopter #	Fuel and Support Equipment				
		Helitack Crew	3 Crew Personnel			

**SUPPORT RESOURCES**

RESOURCE	RADIO CALL	COMPONENTS	TYPES			
			1	2	3	4
Breathing Apparatus Support	Breathing Support		Compressed	Cascade		
Communication	Repeater	Portable/Mobile Repeater Capability	Truck	Trailer	Portable	
Crew Transport	Crew Transport	Passengers	30	20	10	
Field Mobile Mechanic	Repair #	Repair of Mobile Ground Equipment	2-5 Heavy Equipment	Light Equipment		
Food Dispenser	Food Dispenser #	Meal	150	50		
Fuel Tender	Fuel Tender Specify Av Gas, Jet Fuel, Diesel, Gas	Fuel	1000 Gal	100 Gal		
Heavy Equipment Transport	Transport #	Capacity	Heavy (D-7, D-8)	Medium (D-6)	Light (D-4)	
Illumination	Light	Portable Lights	Truck	Trailer		
Mobile Communications	Communications #		Truck/Van	Trailer		
Portable Pump	N/A	Pumping Capacity	500 GPM	250 GPM	50 GPM	
Power Generator	N/A	Generator	Truck	Trailer		
Refrigeration			Truck	Trailer		
Utility Transport			Over 1 Ton	Under 1 Ton		

4-3

**Clear Text.** The use of plain English in radio communications transmissions. No Ten Codes, or agency specific codes are used when using Clear Text.

**Command.** The act of directing, ordering and/or controlling resources by virtue of explicit legal, agency, or delegated authority.

**Command Staff.** The Command Staff consists of the Information Officer, Safety Officer, and Liaison Officer, who report directly to the Incident Commander.

**Company.** Any piece of equipment having a full complement of personnel.

**Comm. Unit.** (Communications Unit) A vehicle (trailer or mobile van) used to provide the major part of an incident Communications Center.

**Coordination.** The process of systematically analyzing a situation, developing relevant information, and informing appropriate command authority (for its decision) of viable alternatives for selection of the most effective combination of available resources to meet specific objectives. The coordination process (which can be either intra- or interagency) does not in and of itself involve command dispatch actions. However, personnel responsible for coordination *May* perform command or dispatch functions within limits as established by specific agency delegations, procedures, legal authority, etc.

**Cooperating Agency.** An agency supplying assistance other than direct suppression, rescue, support, or service functions to the incident control effort (e.g. Red Cross, law enforcement agency, telephone company, etc.)

**Crew Transport.** Any vehicle capable of transporting personnel in specified numbers.

**Dispatch.** The implementation of a *command* decision to move a resource or resources from one place to another.

**Dispatch Center.** A facility from which resources are directly assigned to an incident.

**Division.** That organization level having responsibility for operations within a defined geographic area or with functional responsi-

5-2

bility. The Division level is organizationally between the Strike Team and the Branch. (See also "Group")

**Dozer Company.** Any dozer with a minimum complement of two persons.

**Engine.** Any ground vehicle providing specified levels of pumping, water and hose capacity but with less than the specified level of personnel.

**Engine Company.** Any ground vehicle providing specified levels of pumping, water, hose capacity and personnel.

**FIREMOD.** A computer program which, with given information, will predict an hourly rate of spread from a point.

**Flycrew.** A handcrew of predetermined size transported to an incident via helicopter.

**Food Dispenser.** Any vehicle capable of dispensing food to incident personnel.

**Fuel Tender.** Any vehicle capable of supplying fuel to ground or airborne equipment.

**General Staff.** The group of incident management personnel comprised of:  
The Incident Commander  
The Operations Chief  
The Planning Chief  
The Logistics Chief  
The Finance Chief

**Group.** A functional division (e.g. air support, salvage, structure protection, etc.)

**Hand Crew.** Predetermined individuals that are supervised, organized, and trained principally for clearing brush as a fire suppression measure.

**Heavy Equipment Transport.** Any ground vehicle capable of transporting a dozer.

**Helibase.** A location within the general incident area for parking, fueling, maintenance, and loading of helicopters.

**Helitack Crew.** A crew of 3 or more individuals who may be

assigned to operations or to support helicopter operations.

**Helicopter Tender.** Aground service vehicle capable of supplying fuel and support equipment to helicopters.

**Helispot.** A location where a helicopter can take off and land. Some helispots may be used for temporary retardant loading.

**Incident Action Plan.** The Incident Action Plan, which is initially prepared at the first meeting, contains general control objectives reflecting the overall incident strategy, and specific action plans for the next operational period. When complete, the Incident Action Plans will have a number of attachments.

**Incident Commander.** The individual responsible for the management of all incident operations.

**Incident Command Post (ICP).** That location at which the primary command functions are executed and usually collocated with the incident base.

**Incident Command System (ICS).** The combination of facilities, equipment, personnel, procedures, and communications operating within a common organizational structure with responsibility for the management of assigned resources to effectively accomplish stated objectives pertaining to an incident.

**Initial Attack.** Resources initially committed to an incident.

**IR.** A heat detection system used for fire detection, mapping and hot spot identification.

**IR Groundlink.** A capability through the use of a special mobile ground station to receive air to ground infrared imagery for interpretation.

**Jurisdictional Agency.** The agency having jurisdiction and responsibility for a specific geographical area.

**Message Center.** The message center is part of the Communications Center and is collocated or placed adjacent to it. It receives, records, and routes information about resources reporting to the incident, resource status, and administration and tactical traffic.

**Mobilization Center.** An off incident location at which emer-

gency service personnel and equipment are temporarily located pending assignment, release, or reassignment.

**Multiagency Coordination System (MACS).** The combination of facilities, equipment, personnel, procedures, and communications integrated into a common system with responsibility for coordination of assisting agency resources and support to agency emergency operations.

**NOAA Weather Station.** A mobile weather data collection and forecasting facility (including personnel) provided by the National Oceanic and Atmospheric Administration which can be utilized within the incident area.

**Operations Coordination Center (OCC).** The primary facility of the Multiagency Coordination System. It houses the staff and equipment necessary to perform the MACS functions.

**Operational Period.** The period of time scheduled for execution of a given set of operation actions as specified in the Incident Action Plan.

**Orthophoto Maps.** Aerial photographs corrected to scale such that geographic measurements may be taken directly from the prints. They may contain graphically emphasized geographic features and may be provided with overlays of such features as: water systems, important facility locations, etc.

**Out-of-service Resources.** Resources assigned to an incident but unable to respond for mechanical, rest, or personnel reasons.

**Overhead Personnel.** Personnel who are assigned to supervisory positions which includes Incident Commander, Command Staff, General Staff, Directors, Supervisors and Unit Leaders.

**Planning Meeting.** A meeting, held as needed throughout the duration of an incident, to select specific strategies and tactics for incident control operations and for service and support planning.

**Radio Cache.** A cache may consist of a number of portable radios, a base station and in some cases a repeater stored in a predetermined location for dispatch to incidents.

**Reinforced Attack.** Those resources requested in addition to the initial attack.

**Reporting Locations.** Any one of six facilities/locations where incident assigned resources may check-in. The locations are: Incident Command Post-Resources Unit (RESTAT), Base, Camp, Staging Area, Helibase or Division Supervisor for direct line assignments. (Check-in at one location only)

**Rescue Medical.** Any manned ground vehicle capable of providing emergency medical services.

**Resources.** All personnel and major items of equipment available, or potentially available, for assignment to incident tasks on which status is maintained.

**RESTAT.** An acronym for Resource Unit-A Unit within the Planning Section.

**Section.** That organization level having functional responsibility for primary segments of incident operations such as: Operations, Planning, Logistics, Finance. The Section level is organizationally between Branch and Incident Commander.

**SITSTAT.** An acronym for the Situation Unit-A Unit within the Planning Section.

**Staging Area.** That location where incident personnel and equipment are assigned on a three (3) minute available status.

**Strike Team.** Specified combinations of the same kind and type of resources, with common communications and a leader.

**Task Force.** A group of resources with common communications and a leader temporarily assembled for a specific mission.

**Technical Specialists.** Personnel with special skills who are activated only when needed. Technical Specialists may be needed in the areas of fire behavior, water resources, environmental concerns, resource use and training areas.

**Unit.** That organization element having functional responsibility for a specific incident planning, logistic, or finance activity.

**Water Tender.** Any ground vehicle capable of transporting specified quantities of water.

**APPENDIX A****Southern California Agency Designators**

ID	AGENCY	CITY
ABL	Arrowbear Lake CWD	Arrowbear Lake
ACP	Alpine FPD	Alpine
ADL	Adelanto FD	Adelanto
AFG	George AFB Fire/Crash Station	George AFB
AFN	Norton AFB	Norton AFB
AFV	Vandenberg AFB	Lompoc
AGC	Aerofjet Ord Co	Chino
ALH	Alhambra FD	Alhambra
ANA	Anaheim FD	Anaheim
ANF	U.S.F.S. Angeles N.F.	Pasadena
ANT	Antelope Valley FPD	Coleville
APC	American Potash & Chemical Com	Trona
APP	Apple Valley FPD	Apple Valley
ARC	Arcadia FD	Arcadia
ARG	CSA #82-I.Z.SY#1	Trona
ARR	Lake Arrowhead FPD	Lake Arrowhead
ASP	Aspendell Fire Co.	Bishop
ATA	Atascadero FPD	Atascadero
ATL	Atlantic Richfield Refinery	Carson
ATS	Atascadero State Hosp.	Atascadero
AVA	Avalon FD	Avalon
AVI	Avila Beach FPD	Avila Beach
AYG	Arroyo Grande FD	Arroyo Grande
AZU	Azusa FD	Azusa
BAK	Baker FD	Baker
BAN	Banning FD	Banning
BAR	Barstow FPD	Barstow
BBC	Big Bear City CSD	Big Bear City
BBD	Bakersfield Dist. BLM	Bakersfield
BBL	Big Bear Lake FPD	Big Bear Lake
BCC	Central Valley FPD	Fontana
BDC	San Berdo Fire Warden	San Bernardino
BDF	U.S.F.S. San Bernardino N. F.	San Bernardino

A-1

BOO	San Bernardino FD	San Bernardino
BDU	CDF-San Bernardino R.U.	San Bernardino
BDY	Mt. Baldy FD	Mt. Baldy
BGO	Borrego Springs FPD	Borrego Springs
BGP	Big Pine FPD	Big Pine
BHL	Beverly Hills FD	Beverly Hills
BLY	Blythe FD	Blythe
BMT	Beaumont FD	Perris
BOB	Camp Roberts FD	Camp Roberts
BON	Bonita Sunnyside FPD	Bonita
BOS	Bostonia FPD	El Cajon
BPK	Buena Park FD	Buena Park
BRA	Brea FD	Brea
BRI	Bridgeport FPD	Bridgeport
BRK	Burbank FD	Burbank
BRP	Parker Dam VFD	Parker Dam
BRW	Brawley FD	Brawley
BSH	Bishop VFD	Bishop
CAY	Cayucos Fire Prot. Dist	Cayucos
CBD	Carlsbad FD	Carlsbad
CDD	Calif. Desert Dist. BLM	Riverside
CGP	U.S. Coast Guard	Parker Dam
CHC	Camarillo State Hospital FD	Camarillo
CHN	Chino FPD	Chino
CHO	Chino Rural FPD	Chino
CHV	Chula Vista FD	Chula Vista
CIM	Chino-Calif. Instit. for Men	Chino
CIW	Calif. Inst. for Women	Frontera
CLA	Claremont FD	Claremont
CLX	Calexico FD	Calexico
CMB	Cambria FPD	Cambria
CMC	California Men's Colony FD	San Luis Obispo
CMP	Compton FD	Compton
CNF	U.S.F.S. Cleveland N.F.	San Diego
COA	Coachella FPD	Coachella
COL	Colton FD	Colton
COR	Corona FD	Corona
COS	Costa Mesa FD	Costa Mesa
COV	Covina FD	Covina

A-2

CPH	Lanterman State Hosp.	Pomona
CPT	Calipatria VFD	Calipatria
CRB	Union Carbide Corporation	Bishop
CRC	Corona-Calif. Rehab Center	Corona
CRD	Coronado FD	Coronado
CRF	Crest Forest FPD	San Bernardino
CRP	Carpinteria-Summerland FPD	Carpinteria
CSC	CSA #38	San Bernardino
CSD	#82-I.Z.SV#2	Trona
CST	Crest FPD	El Cajon
CUL	Culver City FD	Culver City
CYC	Southern Calif. Youth Center	Ontario
CYP	Cypress FD	Cypress
DAC	Douglas Aircraft Company FD	Long Beach
DAG	Daggett CSD	Daggett
DHS	Desert Hot Springs FD	Perris
DMR	Del Mar FD	Del Mar
DNY	Downey FD	Downey
ECA	Edison Company Alamitos	Long Beach
ECN	El Centro FD	El Centro
ELC	El Cajon FD	El Cajon
ELM	El Monte FD	El Monte
ELS	El Segundo FD	El Segundo
ENC	Encinitas FPD	Encinitas
ENF	U.S.F.S. Eldorado N.F.	Placerville
EPR	El Paso de Robles School	Paso Robles
ESC	Escondido FD	Escondido
FAW	CSA #53B	Big Bear Lake
FBK	Fallbrook FPD	Fallbrook
FFF	Forest Falls FPD	Forest Falls
FIG	163rd Fighter Interceptor Group	Ontario
FLF	Fullerton FD	Fullerton
FLM	Fillmore VFD	Fillmore
FS	Forest Service, U.S.	Santa Maria
FTH	Foothill FPD	Rancho Cucamonga
FVY	Fountain Valley FD	Fountain Valley
GDA	Gardena FD	Gardena
GDP	General Dynamics FD	Pomona

A-3

GDS	General Dynamics-Convair FIR	San Diego
GGA	Gulf General Atomic Corp	San Diego
GGV	Garden Grove FD	Garden Grove
GLN	Glendale FD	Glendale
GMX	Grossmont-Mt. Helix FPD	La Mesa
GRO	Grover City FD	Grover City
GRT	City of Grand Terrace	San Bernardino
GUA	Guadalupe FD	Guadalupe
GVY	Green Valley Lake-CSA 79 FD	Green Valley Lake
GYP	U.S. Gypsum Company	Plaster City
HAC	Hughes Aircraft Company	Los Angeles
HAW	Hawthorne FD	Hathorne
HCN	Harbison Canyon VFD	El Cajon
HEB	Heber Fire Department	Heber
HEM	Hemet FD	Hemet
HES	Hesperia FPD	Hesperia
HGH	Hughes Aircraft FD	Fullerton
HLT	Holtville FD	Holtville
HMB	Hermosa Beach FD	Hermosa Beach
HNK	CSA #70, ZONE W	Hinkley
HTB	Huntington Beach FD	Huntington Beach
HUG	Hughes Aircraft Company	El Segundo
IDL	Idyllwild FPD	Idyllwild
IDP	Independence FPD	Independence
IMB	Imperial Beach FD	Imperial Beach
IMP	Imperial CFD	El Centro
IMR	Imperial FD	Imperial City
IND	Indio FD	Indio
INF	U.S.F.S. Inyo N.F.	Bishop
ING	Inglewood FD	Inglewood
INW	Indian Wells CFD	Perris
IRV	Irvine FD	Irvine
ITT	ITT-Technical Service, Inc.	Palmdale
JCB	Jacumba CSA #25	Jacumba
JPL	Jet Propulsion Lab. FD	Pasadena
JSH	Joshua Tree FPD	Joshua Tree
JUN	June Lake FPD	June Lake
KAI	Kaiser Steel FD	Fontana
KEE	Keeler Fire Company	Keeler

A-4

September, 1983

ICS 420-1

KMC	Kerr McGee Chemical Co.	Trona
KNF	U.S.F.S. Klamath N.F.	Yreka
LAB	Laguna Beach FD	Laguna Beach
LAC	Los Angeles CFD	Los Angeles
LAD	Los Angeles Dept. Water/Power	Bishop
LAF	Los Alamitos FD	Los Alamitos
LAP	La Palma FD	La Palma
LCC	Lytle Creek Canyon OFC	Lytle Creek
LCI	FCI	Lompoc
LEE	Lee Vining VFD	Lee Vining
LEL	Elsinore VFD	Perris
LFD	Los Angeles City FD	Los Angeles
LGV	Lemon Grove Fire Dept.	Lemon Grove
LHB	La Habra FD	La Habra
LHH	La Habra Heights VFD	La Habra
LKS	Lakeside FPD	El Cajon
LMP	Lompoc FD	Lompoc
LMS	La Mesa FD	La Mesa
LND	Landers VFD	San Bernardino
LNG	Long Valley VFD	Crowley Lake
LNf	U.S.F.S. Lassen N.F.	Susanville
LOB	Long Beach FD	Long Beach
LOC	Lockheed FD	Palmdale
LOM	Loma Linda FD	Loma Linda
LPC	Lockheed Propulsion Co. FD	Redlands
LPF	U.S.F.S. Los Padres N.F.	Goleta
LPN	Lone Pine VFD	Lone Pine
LSW	Lower Sweetwater FPD	National City
LUI	Camp San Luis Obispo FD	San Luis Obispo
LVN	La Verne FD	La Verne
LVY	Lucerne Valley FPD	Lucerne Valley
LYN	Lynwood FD	Lynwood
MAB	March AFB FD	March A.F.B.
MAM	Mammoth Lakes FPD	Mammoth Lakes
MCB	USMC FD	Barstow
MCE	Marine Corps Air Station	El Toro (Santa Ana)
MCP	Camp Pendleton FD	Camp Pendleton
MCR	Marine Corps Recruit Depot	San Diego

A5

September, 1983

ICS 420-1

MCS	Marine Corps Air Station	Tustin
MCT	Center Fire Dept.	29 Palms
MDF	U.S.F.S. Modoc NF	Alturas
MGO	Morongo Valley CSD	San Bernardino
MGY	Montgomery FPD	Chula Vista
MHB	Manhattan Beach FD	Manhattan Beach
MNF	U.S.F.S. Mendocino N.F.	Willows
MNV	Monte Vista FPD	Montclair
MON	Mono City FPD	Lee Vining
MPK	Monterey Park FD	Monterey Park
MRB	Morro Bay FD	Morro Bay
MRV	Monrovia FD	Monrovia
MTB	Montebello FD	Montebello
MTC	Montclair FD	Montclair
MTL	Mt. Laguna AFS	Mt. Laguna
MTO	Montecito FPD	Santa Barbara
MUR	Murieta FPD	Murieta
MVU	CDF—San Diego R.U.	El Cajon
NAG	Northrop Aircraft Group	Hawthorne
NAT	National City FD	National City
NBY	Newberry Springs CSD	Newberry Springs
NDE	USN—11th Naval District	San Diego
NED	Needles FD	San Bernardino
NFA	USN Fleet Analysis Cntr	Norco
NGO	Calif. Air Natl Guards FD	Ontario
NIL	Niland FD	Niland
NOR	City of Norco FD	Norco
NPB	Newport Beach FD	Newport Beach
NSC	US Naval Supply Center	San Diego
NTC	Naval Training Center FD	San Diego
NVA	Armed Forces Reserve Ctr FD	Los Alamitos
NVC	US Naval Amphibious Base	Coronado
NVE	Naval Ocean Systems Center	San Diego
NVF	USN W.S. Fallbrook Annex	Fallbrook
NVH	Naval Reg Medical Center	San Diego
NVI	Outlying Landing Field	Imperial Beach
NVM	Miramar NAS FD	San Diego
NVN	North Island Fire Department	San Diego
NVP	NCBC FD	Port Hueneme

A6

September, 1983

ICS 420-1

NVS	San Diego Naval Station FD	San Diego
NVT	Terminal Island Naval FD	Long Beach
NVU	Naval Air Station	Point Mugu
NVW	Naval Weapon Station	Seal Beach
NZF	U.S.F.S. North Zone	Redding
OAP	Ontario Int. Airport Rd	Ontario
OCE	Oceano FPD	Oceano
OCO	Ocotillo FPD	Ocotillo
OCS	Oceanside FD	Oceanside
OCT	Orcutt FPD	Orcutt
OLC	Olancho-Cartago FD	Olancho
ORC	Orange CFD	Orange
ORG	Orange FD	Orange
OTO	Ontario FD	Ontario
OVU	CDF—Owens Valley R.U.	Bishop
OXD	Oxnard FD	Oxnard
PAS	Pasadena FD	Pasadena
PDS	Palm Desert CFD	Perris
PEN	Goldstone FD	Barstow
PER	Perris Fire Dept	Perris
PLA	Placentia FD	Placentia
PLM	Palomar Mountain VFC	Palomar Mountain
PMS	Palm Springs FD	Palm Springs
PNF	U.S.F.S. Plumas N.F.	Quincy
POM	Pomona FD	Pomona
POW	Poway MWD	Poway
PRF	Paso Robles FD	Paso Robles
PSM	Pismo Beach FD	Pismo Beach
PSS	Mt Pass VFD	Mountain Pass
PTC	Painted Cave VFD	Santa Barbara
PTR	Naval Parachute Test Range FDEI Centro	El Centro
PVD	Palos Verdes FD	Palos Verdes
PVE	Palos Verdes Estates FD	Palos Verdes
PVY	Pine Valley FPD	Pine Valley
QFS	U.S. Forest Service	Bridgeport
RAM	Ramona FPD	Ramona
RBW	Rainbow CSA	Fallbrook
RBX	Rubidoux CSD	Rubidoux
RDB	Redondo Beach FD	Redondo Beach

A7

September, 1983

ICS 420-1

RED	Redlands FD	Redlands
RFB	Reservation FPD B-2	El Cajon
RHR	Rohr Industries FD	Chula Vista
RIA	Rialto FD	Rialto
RIV	Riverside FD	Riverside
RMG	Rancho Mirage CFD	Perris
RNC	Rincon Del Diablo FD	Escondido
RNP	Rincon Pauma V.F.D.	Valley Center
R06	C D F Region VI	Riverside
RRU	CDF—Riverside R.U.	Perris
RSF	Rancho Santa Fe FPD	Rancho Santa Fe
RSP	Running Springs CWD	Running Springs
RVC	Riverside CFD	Perris
SAL	Salton City CSD	Salton City
SBA	Santa Barbara CFD Admin.	Santa Barbara
SBC	Santa Barbara CFD	Santa Barbara
SBY	South Bay FPD	Los Osos
SCE	Southern California Edison	
Com	Etiwanda	
SCL	San Clemente FD	San Clemente
SCP	San Juan Capistrano F D	San Juan Capistrano
SDC	San Diego CO FSC	El Cajon
SEE	Seeley CWD	Seeley
SFD	State Fire Dept	Fort Irwin
SFS	Santa Fe Springs FD	Santa Fe Springs
SGB	San Gabriel FD	San Gabriel
SHF	U.S.F.S. Shasta N.F.	Redding
SJT	San Jacinto FD	San Jacinto
SLB	Seal Beach FD	Seal Beach
SLC	San Luis Obispo CFD	San Luis Obispo
SLO	San Luis Obispo FD	San Luis Obispo
SMA	Santa Monica FD	Santa Monica
SMC	San Marcos FPD	San Marcos
SMD	Sierra Madre FD	Sierra Madre
SMF	San Miguel FPD	San Miguel
SMR	Santa Maria FD	Santa Maria
SMV	Santa Margarita VFD	Santa Margarita
SND	San Diego FD	San Diego
SNF	U.S.F.S. Sierra N.F.	Fresno

A8

SNM	San Marino FD	San Marino
SNP	San Pasqual VFC	Escondido
SNT	Santee FD	Santee
SNU	CDF-San Luis Obispo R.U.	SN Luis Obispo
SOI	Shell Oil Company	Carson
SOL	Solana Local FPD	Solana Beach
SPA	Santa Paula FD	Santa Paula
SPS	South Pasadena FD	South Pasadena
SPV	Spring Valley FPD	Spring Valley
SOF	U.S.F.S. Sequoia N.F.	Porterville
SRF	U.S.F.S. Six Rivers N.F.	Eureka
STA	Santa Ana FD	Santa Ana
STB	Santa Barbara City FD	Santa Barbara
STF	U.S.F.S. Stanislaus N.F.	Sonora
STN	Stanton FD	Stanton
SUN	Sunset Beach VFD	Sunset Beach
SVG	Solvang Mid	Solvang
SZF	U.S.F.S. South Zone	Riverside
TEM	Templeton FPD	Templeton
TMU	U.S.F.S. L.T.B.M.U.	So. Lake Tahoe
TNF	U.S.F.S. Tahoe N.F.	Nevada City
TOR	Torrance FD	Torrance
TSH	Tecopa-Shoshone Fire Co	Tecopa
TST	Tustin F.D.	Tustin
TWP	29 Palms CWD	29 Palms
UNI	University FD	San Luis Obispo
UPL	Upland FD	Upland
VCV	Victorville FD	Victorville
VEN	Ventura FD	Ventura
VER	Vernon FD	Vernon
VIE	Viejas VFC	Alpine
VNC	Ventura CFPD	Camarillo
VNS	Ventura School-CYA	Camarillo
VPK	Villa Park F.D.	Orange
VTA	Vista FD and FPD	Vista
WCV	West Covina FD	West Covina
WHI	Whittier FD	Whittier
WML	Westmoreland FD	Westmoreland
WMT	White Mountain FPD	Benton

A-9

WNT	Winterhaven FPD	Winterhaven
WON	Wonder Valley V.F.D.	29 Palms
WST	Westminster FD	Westminster
WWD	Wrightwood FPD	Wrightwood
YBL	Yorba Linda FD	Yorba Linda
YER	Yerba CSD	Yerba
YVY	Yucca Valley FPD	Yucca Valley
YWD	Yuima Water District	El Cajon

A-10

## APPENDIX A

### Southern California Agency Designators

ID	AGENCY	CITY
FIG	163rd Fighter Intceptor Group	Ontario
TWP	29 Palms CWD	29 Palms
ADL	Adelanto FD	Adelanto
AGC	Aerojet Ord Co.	Chino
ALH	Alhambra FD	Alhambra
ACP	Alpine FPD	Alpine
APC	American Potash & Chemical Com	Trona
ANA	Anaheim FD	Anaheim
ANT	Antelope Valley FPD	Coleville
APP	Apple Valley FPD	Apple Valley
ARC	Arcadia FD	Arcadia
NVA	Armed Forces Reserve Ctr FD	Los Alamitos
ABL	Arrowbear Lake CWD	Arrowbear Lake
AYG	Arroyo Grande FD	Arroyo Grande
ASP	Aspendell Fire Co.	Bishop
ATA	Atascadero FPD	Atascadero
ATS	Atascadero State Hosp.	Atascadero
ATL	Atlantic Richfield Refinery	Carson
AVA	Avalon FD	Avalon
AVI	Avila Beach FPD	Avila Beach
AZU	Azusa FD	Azusa
BAK	Baker FD	Baker
BAN	Banning FD	Banning
BAR	Barstow FPD	Barstow
BMT	Beaumont FD	Perris
BHL	Beverly Hills FD	Beverly Hills
BBC	Big Bear City CSD	Big Bear City
BBL	Big Bear Lake FPD	Big Bear Lake
BGP	Big Pine FPD	Big Pine
BSH	Bishop VFD	Bishop
BLY	Blythe FD	Blythe
BON	Bonita Sunnyside FPD	Bonita
BGO	Borrego Springs FPD	Borrego Springs

A-11

BOS	Bostonia FPD	El Cajon
BRW	Brawley FD	Brawley
BRA	Brea FD	Brea
BRI	Bridgeport FPD	Bridgeport
BPK	Buena Park FD	Buena Park
BRK	Burbank FD	Burbank
R06	CDF-Region VI	Riverside
OVU	CDF-Owens Valley R.U.	Bishop
RRU	CDF-Riverside R.U.	Perris
BDU	CDF-San Bernardino R.U.	Sarr Bernardino
MVU	CDF-San Diego R.U.	El Cajon
SNU	CDF-San Luis Obispo R.U.	San Luis Obispo
CLX	Calexico FD	Calexico
CIW	Calif Inst for Women	Frontera
NGO	Calif Air Natl Guards FD	Ontario
CIVIC	California Men's Colony FD	San Luis Obispo
CPT	Calipatria VFD	Calipatria,
CHC	Camarillo State Hospital FD	Camarillo
CMB	Cambria FPD	Cambria
MCP	Camp Pendleton FD	Camp Pendleton
BOB	Camp Roberts FD	Camp Roberts
LUI	Camp San Luis Obispo FD	San Luis Obispo
CBD	Carlsbad FD	Carlsbad
CRP	Carpinteria-Summerland FPD	Carpinteria
CAY	Cayucos Fire Prot. Dist.	Cayucos
MCT	Center Fire Dept.	29 Palms
BCC	Central Valley FPD	Fontana
CHN	Chino FPD	Chino
CHO	Chino Rural FPD	Chino
CIM	Chino-Calif. Instit. for Men	Chino
CHV	Chula Vista FD	Chula Vista
GRT	City of Grand Terrace	Grand Terrace
NOR	City of Norco FD	Norco
CLA	Claremont FD	Claremont
COA	Coachella FPD	Coachella
COL	Colton FD	Colton
CMP	Compton FD	Compton
COR	Corona FD	Corona
CRC	Corona-Calif Rehab Center	Corona

A-12

September, 1983

ICS 420-1

CRD	Coronado FD	Coronado
COS	Costa Mesa FD	Costa Mesa
COV	Covina FD	Covina
CRF	Crest Forest FPD	San Bernardino
CST	Crest FPD	El Cajon
FAW	CSA #53B	Big Bear Lake
HNK	CSA #70, Zone W	Hinkley
ARG	CSA #82-I.Z.SV#1	Trona
CSD	CSA #82-I.Z.SV#2	Trona
CUL	Culver City FD	Culver City
CYP	Cypress FD	Cypress
DAG	Daggett CSD	Daggett
DMR	Del Mar FD	Del Mar
DHS	Desert Hot Springs FD	Perris
DAC	Douglas Aircraft Company F.D.	Long Beach
DNY	DowneyFD	Downey
ECA	Edison Company Alamitos	Long Beach
ELC	El Cajon FD	El Cajon
ECN	El Centro FD	El Centro
ELM	EL Monte FD	El Monte
EPR	El Paso de Robles School	Paso Robles
ELS	El Segundo FD	El Segundo
LEL	Elsinore VFD	Perris
ENC	Encinitas FPD	Encinitas
ESC	Escondido FD	Escondido
FBK	Fallbrook FPD	Fallbrook
LCI	FCI	Lompoc
FLM	Fillmore VFD	Fillmore
FTH	Foothill FPD	Rancho Cucamonga
FFF	Forest Falls FPD	Forest Falls
FVY	Fountain Valley FD	Fountain Valley
FLF	Fullerton FD	Fullerton
GDA	Gardena FD	Gardena
GGV	Garden Grove FD	Garden Grove
GDP	General Dynamics FD	Pomona
GDS	General Dynamics-Convairstation	San Diego
AFG	George AFB Fire/Crash Station	George AFB
GLN	Glendale FD	Glendale
PEN	Goldstone FD	Barstow

A-13

September, 1983

ICS 4201

GVY	Green Valley Lake-CSA 79 FD	Green Valley Lake
GMX	Grossmont-Mt. Helix FPD	La Mesa
GRO	Grover City FD	Grover City
GUA	Guadalupe FD	Guadalupe
GGA	Gulf General Atomic Corp	San Diego
HCN	Harbison Canyon VFD	El Cajon
HAW	Hawthorne FD	Hawthorne
HEB	Heber Fire Department	Heber
HEM	Hemet FD	Hemet
HMB	Hermosa Beach FD	Hermosa Beach
HES	Hesperia FPD	Hesperia
HLT	Holtville FD	Holtville
HAC	Hughes Aircraft Company	Los Angeles
HGH	Hughes Aircraft FD	Fullerton
HUG	Hughes Aircraft Company	El Segundo
HTB	Huntington Beach FD	Huntington Beach
IDL	Idyllwild FPD	Idyllwild
IMB	Imperial Beach FD	Imperial Beach
IMP	Imperial CFD	El Centro
IMR	Imperial FD	Imperial City
IDP	Independence FPD	Independence
INW	Indian Wells CFD	Perris
IND	Indio FD	Indio
ING	Inglewood FD	Inglewood
IRV	Irvine FD	Irvine
ITT	ITT-Technical Service, Inc.	Palmdale
JCB	Jacumba CSA #25	Jacumba
JPL	Jet Propulsion Lab. F.D.	Pasadena
JSH	Joshua Tree FPD	Joshua Tree
JUN	June Lake FPD	June Lake
KAI	Kaiser Steel FD	Fontana
KEE	Keeler Fire Company	Keeler
KMC	Kerr McGee Chemical Co.	Trona
LHB	La Habra FD	La Habra
LHH	La Habra Heights VFD	La Habra
LMS	La Mesa FD	La Mesa
LAP	La Palma FD	La Palma
LVN	La Verne FD	La Verne
LAB	Laguna Beach FD	Laguna Beach

A-14

September, 1983

ICS 420-1

ARR	Lake Arrowhead FPD	Lake Arrowhead
LKS	Lakeside FPD	El Cajon
LND	Landers VFD	San Bernardino
CPH	Lanterman State Hosp.	Pomona
Lee	Lee Vining VFD	Lee Vining
LGV	Lemon Grove Fire Dept.	Lemon Grove
LOC	Lockheed FD	Palmdale
LPC	Lockheed Propulsion Co. FD	Redlands
LOM	Loma Linda FD	Loma Linda
LMP	Lompoc FD	Lompoc
LPN	Lone Pine VFD	Lone Pine
LOB	Long Beach FD	Long Beach
LNG	Long Valley VFD	Crowley Lake
LAF	Los Alamitos FD	Los Alamitos
LAC	Los Angeles CFD	Los Angeles
LED	Los Angeles City FD	Los Angeles
LAD	Los Angeles Dept. Water/Power	Bishop
LSW	Lower Sweetwater FPD	National City
LVY	Lucerne Valley FPD	Lucerne Valley
LYN	Lynwood FD	Lynwood
LCC	Lytle Creek Canyon Ofc.	Lytle Creek
MAM	Mammoth Lakes FPD	Mammoth Lakes
MHB	Manhattan Beach FD	Manhattan Beach
MAB	March AFB FD	March A.F.B.
MCE	Marine Corps Air Station	El Toro (Santa Ana)
MCS	Marine Corps Air Station	Tucson
MCR	Marine Corps Recruit Depot	San Diego
NVM	Miramar Nas FD	San Diego
MON	Mono City FPD	Lee Vining
MRV	Monrovia FD	Monrovia
MTC	Montclair FD	Montclair
MNV	Monte Vista FPD	Montclair
MTB	Montebello FD	Montebello
MTO	Montecito FPD	Santa Barbara
MPK	Monterey Park FD	Monterey Park
MGY	Montgomery FPD	Chula Vista
MGO	Morongo Valley CSD	San Bernardino
MRB	Morro Bay FD	Morro Bay

A-15

September, 1983

ICS 420-1

BOY	Mt Baldy FD	Mt. Baldy
MTL	Mt Laguna AFS	Mt. Laguna
PSS	Mt. Pass VFD	Mountain Pass
MUR	Murrieta FPD	Murrieta
NAT	National City FD	National City
NVU	Naval Air Station	Point Mugu
NVW	Naval Weapon Station	Seal Beach
NTC	Naval Training Center FD	San Diego
NVE	Naval Ocean Systems Center	San Diego
NVH	Naval Reg Medical Center	San Diego
PTR	Naval Parachute Test Range FD	El Centro
NVP	NCBC FD	Port Hueneme
NED	Needles FD	San Bernardino
NBY	Newberry Springs CSD	Newberry Springs
NPB	Newport Beach FD	Newport Beach
NIL	Niland FD	Niland
NVN	North Island Fire Department	San Diego
NAG	Northrop Aircraft Group	Hawthorne
AFN	Norton AFB	Norton AFB
OCE	Oceano FPD	Oceano
OCS	Oceanside FD	Oceanside
OCO	Ocotillo FPD	Ocotillo
OLC	Olancho-Cartago FD	Olancho
OAP	Ontario Int. Airport FD	Ontario
OTO	Ontario FD	Ontario
ORC	Orange CFD	Orange
ORG	Orange FD	Orange
OCT	Orcutt FPD	Orcutt
NVI	Outlying Landing Field	Imperial Beach
OXD	Oxnard FD	Oxnard
PTC	Painted Cave VFD	Santa Barbara
PLA	Placentia FD	Placentia
PDS	Palm Desert CFD	Perris
PMS	Palm Springs FD	Palm Springs
PVD	Palo Verde FD	Palo Verde
PLM	Palomar Mountain VFC	Palomar Mountain
PVE	Palos Verdes Estates FD	Palos Verdes
BRP	Parker Dam VFD	Parker Dam

A-16

September, 1983

ICS 420-1

PAS Pasadena FD  
 PRF Paso Robles FD  
 PER Perris Fire Dept  
 PVY Pine Valley FPD  
 PSM Pismo Beach FD  
 POM Pomona FD  
 POW Poway MWD  
 RBW Rainbow CSA  
 RAM Ramona FPD  
 RMG Rancho Mirage CFD  
 RSF Rancho Santa Fe FPD  
 RED Redlands FD  
 RDB Redondo Beach FD  
 RFB Reservation FPD B-2  
 RIA Rialto FD  
 RNC Rincon Del Diablo FD  
 RNP Rincon Pauma V.F.D.  
 RIV Riverside FD  
 RVC Riverside CFD  
 RHR Rohr Industries FD  
 RBX Rubidoux CSD  
 RSP Running Springs CWD  
 SAL Salton City CSD  
 BDO San Bernardino FD  
 BDC San Berdo Fire Warden  
 SCL San Clemente FD  
 NVS San Diego Naval Station F.D.  
 SDC San Diego Co FSC  
 SND San Diego FD  
 SGB San Gabriel FD  
 SJT San Jacinto FD  
 SCP San Juan Capistrano FD  
 SLC San Luis Obispo CFD  
 SLO San Luis Obispo FD  
 SNM San Marino FD  
 SMC San Marcos FPD  
 SMF San Miguel FPD  
 SNP San Pascual VFC  
 SBC Santa Barbara CFD

Pasadena  
 Paso Robles  
 Perris  
 Pine Valley  
 Pismo Beach  
 Pomona  
 Poway  
 Fallbrook  
 Ramona  
 Perris  
 Rancho Santa Fe  
 Redlands  
 Redondo Beach  
 El Cajon  
 Rialto  
 Escondido  
 Valley Center  
 Riverside  
 Perris  
 Chula Vista  
 Rubidoux  
 Running Springs  
 Salton City  
 San Bernardino  
 San Bernardino  
 San Clemente  
 San Diego  
 El Cajon  
 San Diego  
 San Gabriel  
 San Jacinto  
 San Juan Capistrano  
 San Luis Obispo  
 San Luis Obispo  
 San Marino  
 San Marcos  
 San Miguel  
 Escondido  
 Santa Barbara

A-17

September, 1983

ICS 420-1

SFS Santa Fe Springs FD  
 SMA Santa Monica FD  
 SMR Santa Maria FD  
 SMV Santa Margarita VFD  
 SPA Santa Paula FD  
 STA Santa Ana FD  
 STB Santa Barbara City FD  
 SNT Santee FD  
 SLB Seal Beach FD  
 SEE Seeley CWD  
 SOI Shell Oil Company  
 SMD Sierra Madre FD  
 SOL Solana Local FPD  
 SVG Solvang MID  
 SBY South Bay FPD  
 SPS South Pasadena FD  
 CYC Southern Calif Youth Center  
 SCE Southern California  
 Edison Corn  
 SPV Spring Valley FPD  
 STN Stanton FD  
 SBU State Division of Forestry  
 SFD State Fire Dept  
 SUN Sunset Beach VFD  
 TSH Tecopa-Shoshone Fire Co  
 TEM Templeton FPD  
 NVT Terminal Island Naval FD  
 TOR Torrance FD  
 TST Tustin F.D.  
 GYP U S Gypsum Company  
 CGP U.S. Coast Guard  
 ANF U.S.F.S. Angeles N.F.  
 BDF U.S.F.S. San Bernardino N.F.  
 CNF U.S.F.S. Cleveland N.F.  
 ENF U.S.F.S. Eldorado N.F.  
 INF U.S.F.S. Inyo N.F.  
 KNF U.S.F.S. Klamath N.F.  
 LNF U.S.F.S. Lassen N.F.  
 LPF U.S.F.S. Los Padres N.F.

Santa Fe Springs  
 Santa Monica  
 Santa Maria  
 Santa Margarita  
 Santa Paula  
 Santa Ana  
 Santa Barbara  
 Santee  
 Seal Beach  
 Seeley  
 Carson  
 Sierra Madre  
 Solano Beach  
 Solvang  
 Los Discs  
 South Pasadena  
 Ontario  
 Etiwanda  
 Spring Valley  
 Stanton  
 Fort Irwin  
 Sunset Beach  
 Tecopa  
 Templeton  
 Long Beach  
 Torrance  
 Tustin  
 Plaster City  
 Parker Dam  
 Pasadena  
 San Bernardino  
 San Diego  
 Placerville  
 Bishop  
 Yreka  
 Susanville  
 Goleta

A-18

September, 1983

ICS 4241

MDF U.S.F.S. Modoc N.F.  
 MNF U.S.F.S. Mendocino N.F.  
 NZF U.S.F.S. North Zone  
 PNF U.S.F.S. Plumas N.F.  
 SHF U.S.F.S. Shasta-Trinity N.F.  
 SNF U.S.F.S. Sierra N.F.  
 SOF U.S.F.S. Sequoia N.F.  
 SRF U.S.F.S. Six Rivers N.F.  
 STF U.S.F.S. Stanislaus N.F.  
 SZF U.S.F.S. South Zone  
 TMU U.S.F.S. L.T.B.M.U.  
 TNF U.S.F.S. Tahoe N.F.  
 CRB Union Carbide Corporation  
 UNI University FD  
 UPL Upland FD  
 BLM US Bureau of Land  
 Management  
 NSC US Naval Supply Center  
 NVC US Naval Amphibious Base  
 MCB USMC FD  
 NFA USN Fleet Analysis Cntr  
 NVF USN W.S. Fallbrook Annex  
 NDE USN-11th Naval District  
 AFV Vandenberg AFB  
 VEN Ventura FD  
 VNC Ventura CFPD  
 VNS Ventura School-CYA  
 VER Vernon FD  
 VCV Victorville FD  
 VIE Viejas VFC  
 VPK Villa Park F.D.  
 VTA Vista FD and FPD  
 WCV West Covina FD  
 WST Westminter FD  
 WML Westmoreland FD  
 WMT White Mountain FPD  
 WHI Whittier FD  
 WNT Winterhaven FPD  
 WON Wonder Valley V.F.D.

Alturas  
 Willows  
 Redding  
 Quincy  
 Redding  
 Fresno  
 Porterville  
 Eureka  
 Sonora  
 Riverside  
 So. Lake Tahoe  
 Nevada City  
 Bishop  
 San Luis Obispo  
 Upland  
 Bishop  
 San Diego  
 Coronado  
 Barstow  
 Norco  
 Fallbrook  
 San Diego  
 Lompoc  
 Ventura  
 Camarillo  
 Camarillo  
 Vernon  
 Victorville  
 Alpine  
 Orange  
 Vista  
 West Covina  
 Westminster  
 Westmoreland  
 Benton  
 Whittier  
 Winterhaven  
 29 Palms

A-19

September, 1983

ICS 420-1

WWD Wrightwood FPD  
 YER Yerma CSD  
 YBL Yorba Linda FD  
 YVY Yucca Valley FPD  
 YWD Yuima Water District

Wrightwood  
 Yermo  
 Yorba Linda  
 Yucca Valley  
 El Cajon

A-20

**Appendix B  
INCIDENT COMMAND SYSTEM  
FIRE AGENCY RADIO FREQUENCIES**

RADIO FREQUENCY	AGENCY/USER	STANDARD SYNTHESIZED RADIO CONTROL HEAD CONFIGURATION		
		20	60	32
3348	LFD-Command 12			
3352	LFD-Command 13			
3360	LFD-Command 11			
3366	OES-#2(1T)			
3370	OES-#2(1R)			
3382	LFD-TAC7(RED)			
3386	LFD-TAC8(RED)			
3390	LFD-Command 14			
3394	LFD-TAC 91(RED)			
3398	LFD-Command 10 (RED)			
3398	OES-#1(1T)			
4606	OE 5-# 1 IRI	1 E	Ch 40	Ch 31
4614	ORC-TAC 2			
4638	ORC-TAC 1			
4642	ORC-TACS			
4648	ORC-TAC4			
4648	ORC-Command3			
151.160	CDF-Shasta-Trnwy (Local)	1 D		
151.175	CDF-Riverside East IRI	2 O	Ch 50	
151.175	CDF Riverside East ITI			
151.190	CDFSan Diego IRI	3 D	Ch 51	
151.220	CDF-San Diego (T)			
151.250	CDF-HIT Red	1 G		
151.250	CDF-San Benito-Monterey	4 D		
151.265	CDF-Regions 6 & 4 (RI)	5 D	Ch 46	
151.280	CDF-Region 5 (T)			
151.295	CDF Blue Air			
151.310	CDF-Green Air			
151.310	CDF-Yellow Air			
151.325	CDF-San Bernardino East/Region 2	6 D	Ch 47	
151.340	CDF-Lake-Colusa	7 D		
151.355	CDF-State Net IRI	8 D		
151.370	CDF-State Net ITI			
151.385	CDF-San Mateo-Santa Cruz	9 O		
151.400	CDF-Riverside West (RI/Region 1	1 O	Ch 49	
151.445	CDF-Riverside West ITI/Region 1			
151.460	CU F -Santa Clara	IT O		
151.445	COF-San Bernardino West IRI/Reg. 5	12 D	Ch 48	
151.460	COF-San Bernardino West ITI/Reg. 5			
153.770	COF-Madera-Mariposa-Merced SAC	13 D	Ch 58	
153.830	DES-Fremars(RI)			
153.830	OES-Firemars ITI	2 G	Ch 39	Ch 30
53.905	SBC	12 E		
154.010	VNC # 1	8 E	Ch 55	
154.160	OES-TAC	1 E	Ch 40	Ch 31

B-1

**Appendix B- (Con't)**

RADIO FREQUENCY	AGENCY/USER	STANDARD SYNTHESIZED RADIO CONTROL HEAD CONFIGURATION		
		20	60	32
154.220	DES-TAC			Ch 4
154.250	SBC			Ch 32
154.265	IDES-White 2			
154.280	DESWhite 1	3E 3G 1 H	Ch 37 52	Ch 28
154.295	DES-White 3	4E 5G	Ch 38	Ch 9
154.325	VNC#2		9E	C 56
154.340	LAC#2-Valley Dispatch		SE	C 53
154.400	LAC # 3 - Antelope Dispatch		7 E	
154.430	LAC # 1 - LA Dispatch		6 E	Ch 54
166.375	BLM Riverside			Ch 59
166.4875	BUM Riverside			Ch 60
166.675	USFS-Airnet(Airtacbc)			
168.025	USFS Airnet(ADSIT)			
168.050	USFS-BIFC TAC-1			Ch 26
168.075	USFS-BIFC TAC-2			Ch 7
168.100	USFS-BIFC IC31 CSL-3	9 H		C 33
168.125	USFS-BIFC IC31 CSL-2	8H		Ch 24
168.150	USFS-Region 5(F1)CSL-4			Ch 22
168.200	CNF-F#3		4F	Ch 26
168.250	USFS-BIFC TAC-2	7 D		Ch 8
168.600	USFS-BIFC TAC-3	3 H		Ch 27
168.625	USFS-Air Dispatch			Ch 19
168.650	USFS-R5 Frescope		14H	
168.700	USFS-BIFCIC1)CSL-1	7H		C 29
168.725	USFS-AS-F 1 CSL-4	5 H		Ch 20
168.750	USFS-CNFF1	3F		Ch 26
169.125	USFS-RSCeiling	2		Ch 43
169.150	USFS-Armor2(Aetac,os)			Ch 15
169.175	US FS-FrescopeCSL-5		1 H	
169.875	USFS-FrescopeCSL-4		10H	
169.925	USFS-BDFF3		6F	
169.950	USFS-ANPF3		8	
170.000	USFS-R5 Au/Ground	2 F 5 H	Ch 23	Ch 4
170.425	USFS-BIFC. III RPT CSL-3		C 34	Ch 25
170.450	USFS- BIFCIC2)RPTCSL-2		Ch 32	C 23
170.475	USFS-LPF F2		0 F	
170.525	USFS-1'descops TAC 4		4 H	
170.550	USFS-LPF F1		9F	C 44
171.475	USFS-BDFF1		5F	Ch 45
171.500	USFS-RSE1 TAC-A			Ch 5
171.575	US FS-ANF F 1		7 F	Ch 42
172.350	USFS-LPF F4		11	
470.3625	LAC Antelope			
470.4125	LAC-LA			
470.4375	LAC Valley			
470.4625	LAC-Valley			
470.4875	LAC-LA			

B-2

RADIO FREQUENCY	AGENCY/USER	STANDARD SYNTHESIZED RADIO CONTROL HEAD CONFIGURATION		
		20	60	32
4705625	LAC-Antelope			
4705676	LAC-LA			
470 6375	LAC-Antelope			
4706625	LAC-Valley			
6061376	LFD-TAC4(Yellow)			
5063126	LFD-TAC 1 (Yellow)			
6066375	LFD-TAC2(Yellow)			
5066375	LFD-TAC 5 (Yellow)			
5069125	LFD-TAC 3 (Yellow)			
6070125	1 6 (Yellow)			

**RADIO CACHES**

**US FOREST SERVICE REGION 5 EMERGENCY RADIO CACHE**

NUMBER AND TYPE	CHANNELS				
	AC 1	TAC 2	COM 3	COM R-4	AIR/GRD 5
28 6-channel HTS					
4 Packaets	68060	168200	168 700	T 70975	170000
1 Base Station			R 168 700		

F-6 cache is located in Sonata. F-6 i6 located in ReddIOQ. Cache also includes battery operated radio repeater and 750W AC power plant Order through South Zone

**FIREMARS RADIO CACHE**

NUMBER AND TYPE	CHANNELS				
	1	2	3	4	5
20					
6 Channel Pent/Port	154 280	154 265	154 295	T 153 630	
19 6 Channel Pers/Port	(White1)	(White2)	IWhite3)	A154265	154160 154220
4 5 Channel Base/amb Is cache)	154 280	154 265	154 295	T 153 830	1543.160
			R 154 95		(DES STATE)

FIREMARS # 1 is located at LA Co Fire Station # 26 in La Puente  
 FIREMARS radio cache includes trailer mounted repeater and/or base station Order through Agency Dispatch  
 FIREMARS # 2 is located at the Rialto Fire Department in San Bernardino County (No base/repeater)

**NATIONAL FIRE RADIO CACHE 500 C-1 SYSTEM**

Number, Equipment, and Type	Function and Frequency				
	AC 1	1A11	CO 1	CO 9e5	AIR DISP
6 2 channel packsets. TAC Div.	168 050	168 260			
18 5 channel personal portable TAX Div		X			
27 4 channel personal portable TAX Dv				X	
4 2 channel packsets base camp			X		
8 5 channel personal portable base camp	X				
3 2 channel packsets base camp			X		
10 2 channel personal portable TAX Spec		X			

NFRC C 1 cache preposioned at Horse Interagency Fire Center. Cache includes repeater and a craft VHF 720 Service net, repeater, and system numbers S-3 and S-4 are also available and compatible with above Order through Agency Dispatch.

Note The Air Dispatch channel 1168 1111,s not available for field use 10, Air-Ground communication-cal-,within USFS Region S (Cahifornia).

**NATIONAL FIRE RADIO CACHE 600 C-2 SYSTEM**

Number, Equipment, and Type	Function and Frequency				
	TA	TAC 2	AC 3	CO 2	AIR DISP
6 2-channel packsets TAI D,	68 050	168 200	166 600	68 00	168 625
4 6-channel peisoS1 portable TAX Div				X	
4 5-channel packs- base camp)	X				
8 6-channel personal portable base camp					S
3 5-channel packsets base camp)					
1 2-channel personal portable TAX Spec		X			

NFRC C-2 cache located at USFS Arcadia Service Center. Cache includes repair and li-aft VHF 720 Service net, repeater (L 2) F-1, F-2, or F-3 and system numbers S-11, 12, and 13 are also available and compatible with the above. Order through Agency Dispatch

Note The Air Dispatch channel (168 625) is not available for field use to, Air-Ground communication within USFS Region (Caldorra)

Phors/ectronic composition by  
 GJFDINIA OFFICE OF STATE PRINTING

## **APPENDIX B**

## APPENDIX B

### U.S.G.S. WESTERN MAPPING CENTER ORTHOPHOTO PRODUCTION

#### BACKGROUND

Western Mapping Center (WMC) has been involved with orthophoto production about 19 years. During this period the WMC has used three T-64 Orthophotoscopes, one Wild PP-08 Orthoscanner, and two Wild OR-1 Orthoscanning Systems. The Center has had the experience of processing over 20,000 orthophotos over these years. They have produced over 11,000 orthophotoquads in the seven i-minute quadrangle format. One state (Hawaii) is completely covered by orthophotoquads and Arizona is complete except for the Grand Canyon area which is too steep to be able to rectify. In fact, most of the western states are covered by orthophotoquads. Of the 11,468 seven b-minute quadrangles in the WMC jurisdiction, 10,586 have orthophotoquads covering them. This represents 92 per cent of the quadrangles in WMC.

#### NUMBER OF ORTHOPHOTOQUADS IN WMC BY STATE

State	No. Quads	No. OQ's	No. H-R OQ	% of Total
Arizona	1909	1858	0	97.3
California	2732	2495	246	91.3
Hawaii	133	133	0	100
Idaho	1576	1538	28	97.6
Nevada	1896	1869	0	98.5
Oregon	1847	1752	60	94.8
Washington	1375	901	253	65.5
	11468	10546		91.9

\*As of June 1985

One of the major problems in orthophoto production is quality control. This quality control starts with the aerial photography and the original aerial negatives. The density minimums and maximums are critical in the production of an orthophotoquad. The quality control of this is as critical as the quality control of the metric accuracy of the orthophotoquad. If the minimum is below a densitometer reading of 0.4, then imagery is being lost in the light areas. If the density reading of the maximum area is above 1.4, then you are beginning to lose imagery in the dark area. Every step is checked by densitometer readings; the original aerial negatives, the diapositive used to scan the orthophoto, the original orthophoto negative, and the composite of the orthophotoquad. Each step after the orthophoto is scanned on the Wild OR-1 is exposed on a special light box called a Variable Intensity Printer, which has over 200 15-watt light bulbs. Each is on a rheostat, allowing it to be individually made brighter or dimmer or out completely.

# EXEMPLARY PRACTICES IN EMERGENCY MANAGEMENT: MONOGRAPH EVALUATION

## THE CALIFORNIA FIRESCOPE PROGRAM: Firefighting Resources of Southern California Organized Against Potential Emergencies

**Your responses to the following questions will assist us in producing publications which are responsive to the needs of the emergency management field**

1. Please indicate your assessment of the material contained by rating the following items. (Circle the number below which represents your opinion for each item; 6 being high and 1 low.)

a) Clarity of the information presented (i.e., was the language clear and easy to understand; were the major concepts easy to identify?)

Very Clear            6     5     4     3     2     1     Not Very Clear

b) Sequence in which topics were discussed

Very Logical        6     5     4     3     2     1     Not Very Logical

c) Usefulness of Information

Very Useful         6     5     4     3     2     1     Not Very Useful

d) Relevancy of information provided to your work needs

Very Relevant        6     5     4     3     2     1     Irrelevant

2. Please rate the overall quality of this document

Excellent            6     5     4     3     2     1     Poor

3. How do you plan to use the material? (Check all that apply.)

Reference

Training

Develop new procedures

Education

Adapt current procedures

Personal interest

Share information with staff

Other (please specify)

4. What concepts presented in this publication were of most value to you, and why?

5. Do you have any suggestions on how this document could be improved? (i.e., the content, the sequence, the format used to present the material, the level of detail provided, and the clarity of the information.)

6. Do you have a nomination for an exemplary practice in emergency management? Please provide the contact persons name, agency, address, and telephone number below:

Name

Agency

Address

Telephone

7. Other comments?

8. Job Title

9. (Optional) Name

Address

Telephone

THANK YOU FOR YOUR COOPERATION

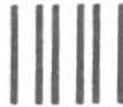
FOLD ON THIS LINE

SEAL EDGES

(USE BUSINESS REPLY LABEL)

Federal Emergency Management Agency  
National Emergency Training Center  
Emmitsburg, Maryland 21727

Official Business  
Penalty for Private Use, \$300



NO POSTAGE  
NECESSARY  
IF MAILED  
IN THE  
UNITED STATES

**BUSINESS REPLY LABEL**  
FIRST CLASS PERMIT NO. 11989 Washington, D. C.

Postage Will Be Paid by Federal Emergency Management Agency

**DIRECTOR  
LEARNING RESOURCE CENTER  
NATIONAL EMERGENCY TRAINING CENTER  
BOX M1  
16825 SOUTH SETON AVENUE  
EMMITSBURG, MARYLAND 21727**

